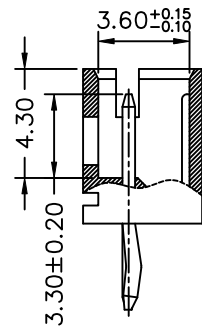
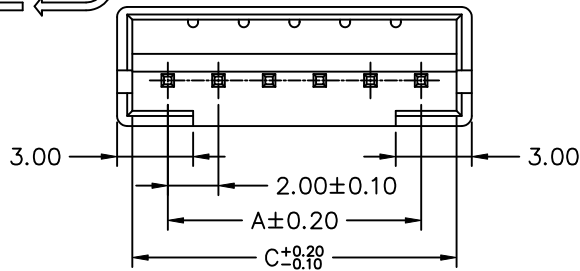


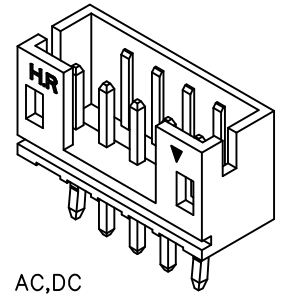


(TOP VIEW)

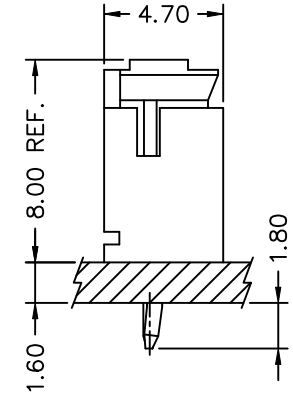
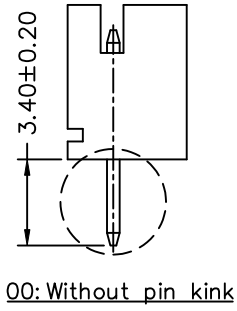
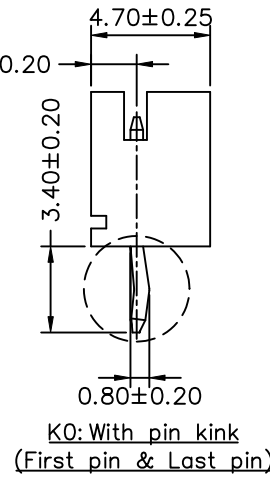
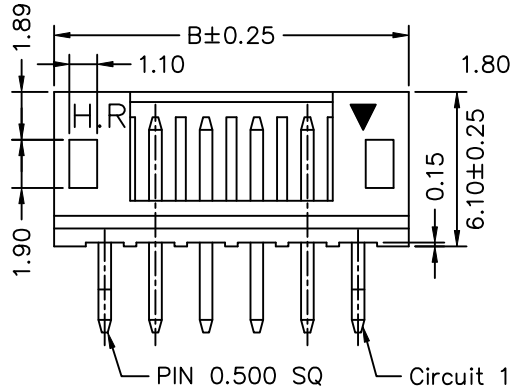


P/N LEGEND

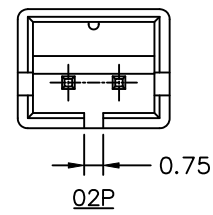
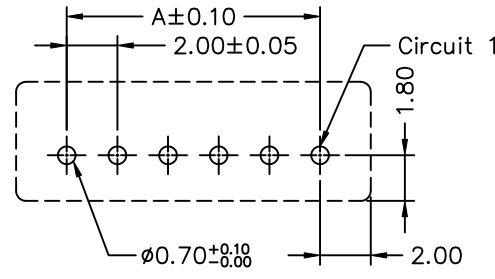
- | | | | | | | | | | |
|-------|----|----|---|---|---|----|---|----|---|
| A2001 | WV | XP | N | X | X | XX | N | XX | G |
| ① | ② | ③ | ④ | ⑤ | ⑥ | ⑦ | ⑧ | ⑨ | ⑩ |
- ① Series No.
 - ② Connector type: WV=Vertical
 - ③ No. of circuits
 - ④ N=Halogen Free
 - ⑤ Material: 0=Nylon 66-V0; L=LCP; 6=NY6T
 - ⑥ Color: W=White; B=Black; N=Black
 - ⑦ Plating code for contacts: G1=Gold-flash; T1=Tin-plated; M1=Matte Tin-plated
 - ⑧ Plating code: N=Non-plating
 - ⑨ Option code: K0=With pin kink; 00=Without pin kink
 - ⑩ Packing code: G=Bag



SPECIFICATIONS
 Current Rating: 2A AC,DC
 Voltage Rating: 100V AC,DC
 Temperature Range: -25°C ~ +85°C
 Contact Resistance: 10mΩ Max.
 Insulation Resistance: 1000MΩ Min.
 Withstanding Voltage: 800V AC/minute
 Pin Material: Brass



Circuit No.	Dimensions		
	A	B	C
02P	2.00	6.00	4.80
03P	4.00	8.00	6.80
04P	6.00	10.00	8.80
05P	8.00	12.00	10.80
06P	10.00	14.00	12.80
07P	12.00	16.00	14.80
08P	14.00	18.00	16.80
09P	16.00	20.00	18.80
10P	18.00	22.00	20.80
11P	20.00	24.00	22.80
12P	22.00	26.00	24.80
13P	24.00	28.00	26.80
14P	26.00	30.00	28.80
15P	28.00	32.00	30.80
16P	30.00	34.00	32.80
17P	32.00	36.00	34.80
18P	34.00	38.00	36.80



				燦達電子工業股份有限公司 JOINT TECH ELECTRONIC IND. CO., LTD.		
UNIT		SCALE	SHEET		TITLE:	
mm		1 : 1	1 of 1			
DRAWN BY		APPROVED BY		2.00mm PITCH 180° WAFER		
陳敏		董正一				
2012.06.12		2012.06.12				
GENERAL TOLERANCE		ANGLE±				
A2	EN20200803394	2020.08.03	徐貴湖	DRAW NO. : A2001WV-XPXXXXXXX		
A1	EN1906170004	2019.05.07	焦秋蘭			REV. A2
A0	NEW RELEASE	2012.06.12	陳敏			
REV.	DESCRIPTION	DATE	NAME			